

# who, what, where, when, web

*It's all  
online*



## SAGE Home

[www.planopta.org/sage.htm](http://www.planopta.org/sage.htm)  
Start here for education, communication, resources and all things SAGE.



## SAGE Event Calendar

General and special interest events are posted here year-round.



## Summer Friends

Just because school is over doesn't mean friendships are.

## Local News

Local school contact information.



## Updates

What else? The latest information regarding SAGE.

Approximately 25% of the PISD student population has a special learning need.

### SAGE stands for: Special And Gifted Education.

The Plano Council of PTAs established the SAGE committee to provide an opportunity for families of students who learn differently to share resources and friendship.

If you or someone you know loves a child who participates in Special Education, the PACE (Gifted and Talented Program) or simply struggles with learning differences, this is your chance to come together with others!

**SAGE**  
**PISD Council of PTAs**  
[sage@planopta.org](mailto:sage@planopta.org)

Local SAGE contact:

-----

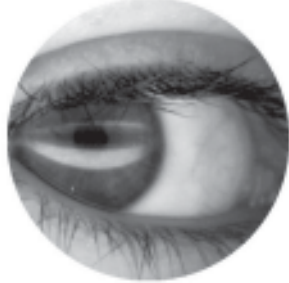
-----



Plano ISD Council  
**PTA**  
*everychild.onevoice.\**

**S A**  
**G E**  
special and gifted education

## education



SAGE sponsors various classes and seminars throughout the year to provide families and educators the latest information. These classes are usually free of charge. The SAGE Brown Bag Lunch series is an especially popular opportunity to get information as well as meet others who share a similar interest or concern.

Past topics include:

- *Managing the IEP Process*
- *Advocating for your Child*
- *Study Skills for Gifted Students*
- *Asperger Syndrome & Social Skills*

## communi



The primary objective of SAGE is to promote dynamic communication between educators and families. It is through cooperation that we help ensure that all diverse learners derive the most from their education.

The SAGE website at [www.planopta.org/sage.htm](http://www.planopta.org/sage.htm) is communication central with event calendars, updates, resource links and contact information for local school chairpersons.

No matter where you may be on the path of educating your child/ren, there are families who have traveled ahead of you and families who will follow after you.  
  
 It is vital that we combine our knowledge, our experience, and our resources to benefit all our children along the way.

## support



SAGE facilitates the formation of special interest groups so that families can share the information that is most relevant to their needs.

SAGE interest groups include, but are not limited to:

- |                              |                                      |
|------------------------------|--------------------------------------|
| <b>Autism/Aspergers</b>      | <b>Mental Illness</b>                |
| <b>ADHD</b>                  | <b>Speech</b>                        |
| <b>Down Syndrome</b>         | <b>General Special Needs</b>         |
| <b>Dysgraphia</b>            | <b>Obsessive Compulsive Disorder</b> |
| <b>Dyslexia</b>              | <b>Tourettes</b>                     |
| <b>Epilepsy</b>              | <b>Written Expression Disorder</b>   |
| <b>Gifted &amp; Talented</b> |                                      |
| <b>Hearing Impairment</b>    |                                      |

Support group listings by challenge and/or campus can be found on the SAGE website link at: [www.planopta.org/sage.htm](http://www.planopta.org/sage.htm).